

Collector's Choice

Fall 2013

MIRIAM SHIELL FINE ART

This Collector's Choice catalogue represents a two-part exhibition taking place in the Fall of 2013.

Part I is installed in the gallery and includes a gorgeous blue 'Open' by Robert Motherwell, a stunning new portrait by Alex Katz, and in anticipation of Jack Bush's 2014 retrospective at the National Gallery, a striking late work titled 'Spin off Red'.

Part II of this exhibition will take place at the Toronto International Art Fair, October 24th to 27th, and will be anchored by two masterworks; a 6 1/2 x 9' 1975 Sam Francis work on canvas and a rare monumental Paterson Ewen routed plywood moon.

We look forward to seeing you in the gallery and at the Toronto International Art Fair.

Sam Francis

Untitled (SFF.813)

1982, Acrylic on Canvas

14 15/16 x 23 13/16 in. (37.94 x 60.48 cm)

Signed on the back

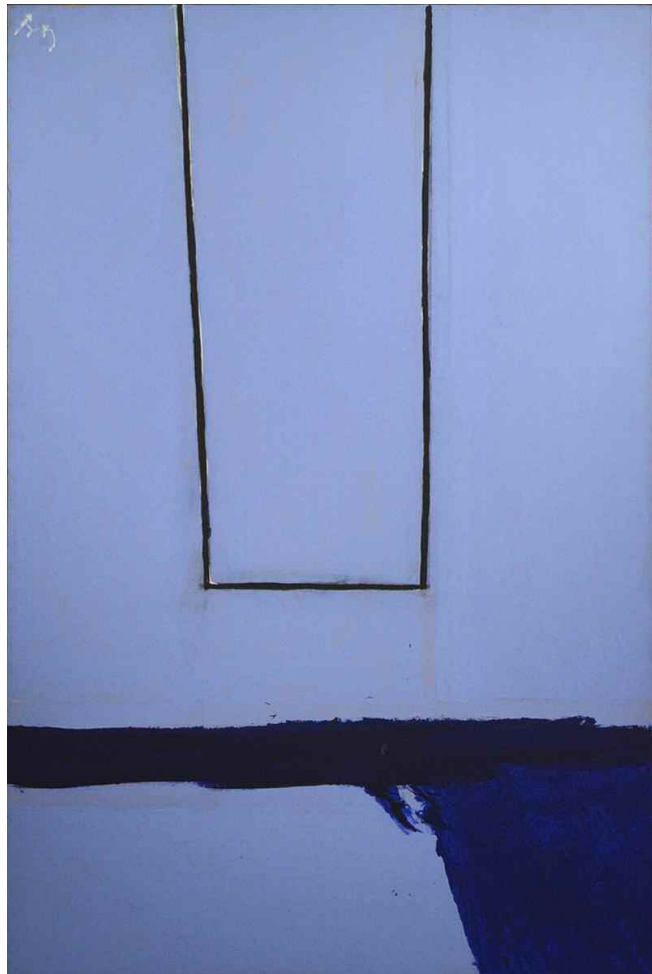


Robert Motherwell

Open, #75

1969, Acrylic on Canvas

60 x 40 in. (152.4 x 101.6 cm)



Sorel Etrog

Source 2

1967, Marble

49 1/2 x 22 x 19 in. (125.73 x 55.88 x 48.26 cm)



Sorel Etrog

Sun Bird II

1962-64, Bronze

91 3/4 in. (233 cm) high

Signed "Etrog" edition 2/5 stamped with foundry



Paterson Ewen

Half Moon

1987, Acrylic on plywood
90 x 96 in. (228.6 243.8 cm)



Lynn Chadwick

Maquette III High Wind (801)

1980, Bronze

24 1/2 x 12 x 15 in. (62.23 x 30.48 x 38.1 cm)

edition 6 of 9



Lynn Chadwick

Maquette for Hello Paris

1981, Bronze

36 x 8 x 7.25 in. (91.4 x 20.3 x 18.4 cm)

'C C81 S 5/9 (on back leg)



Jack Bush

Spin off Red

1976, Acrylic on Canvas

54.2 x 86.2 in.(137.7 x 219 cm)

Signed, Inscribed



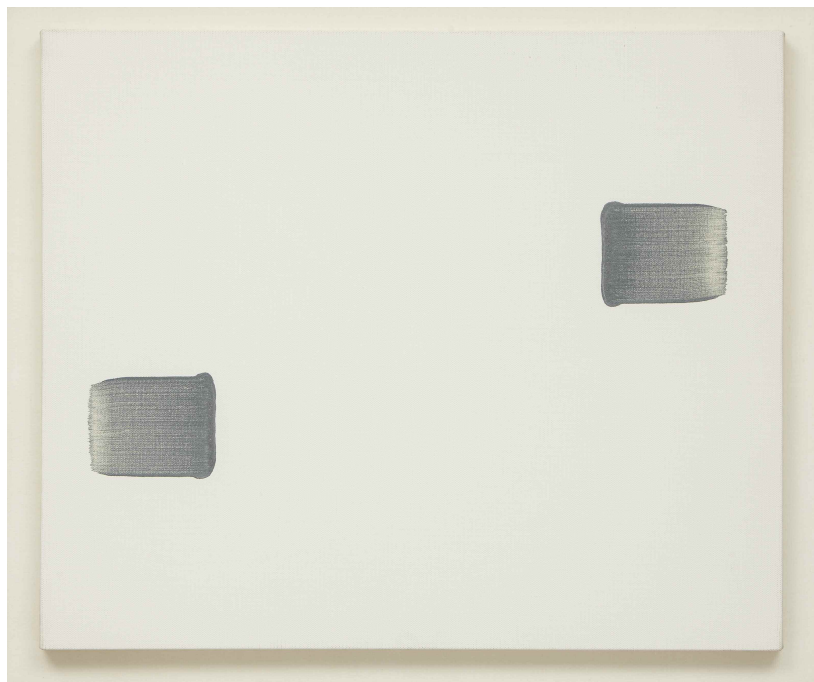
Lee Ufan

Correspondance

1996, Pigment suspended in glue on Canvas

23 7/8 x 28 5/8 in. (60.6 x 72.7 cm)

Signed on right edge of Canvas Lee Ufan



Sam Francis

Question to Oblivion

1975, Acrylic on Canvas

78 x 108 in. (198 x 274 cm)



Frank Stella

Playskool Door

1983, Bronze

33 x 24 x 17 in. (83.8 x 61 x 43.2 cm)

Signed date '83 and numbered 4/5

on a plate affixed to the reverse



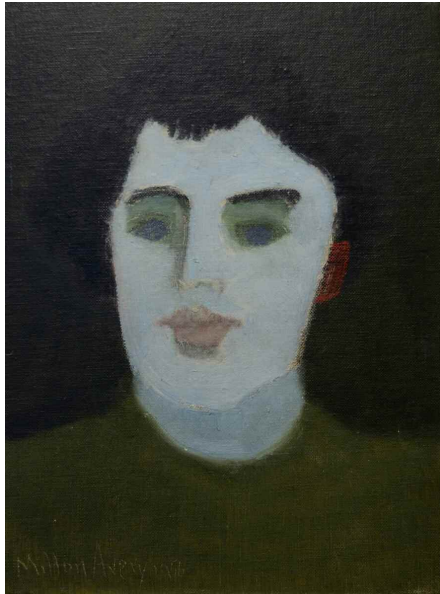
Milton Avery

Girl with Blue Eyes

1956, Oil on Canvas board

12 x 9 in. (30.48 x 22.86 cm)

Signed lower left Milton Avery 1956



Henry Moore

Head of a Girl

1960, Bronze

10 x 8 1/4 x 4 1/4 in. (25.5 x 21 x 11 cm)

stamped with signature and numbered 3/9



Alex Katz

Tajaiia

2013, Oil on Canvas

66 x 48 in. (167.64 x 121.92 cm)



MIRIAM
SHIELL
FINE ART

16A Hazelton Avenue
Toronto, ON M5R 2E2

416.925.2461
f: 416.925.2471

fineart@miriamshiell.com
www.miriamshiell.com