

A vibrant autumn landscape with a path leading through colorful trees and a small building in the distance. The scene is dominated by warm tones of red, orange, and yellow, with some cooler blues and purples in the shadows. The path is a light-colored, unpaved road that curves through the forest. In the background, a small, light-colored building with a dark roof is visible on the right side. The overall atmosphere is serene and picturesque, capturing the peak of fall foliage.

COLLECTORS CHOICE

FALL 2008



Jack Bush UNTITLED
c. 1970, Oil crayon on paper
2.5 x 1.75" (6.5 x 4.5cm)

Artists are fully represented: **Jack Bush**, in collaboration with the Estate, is well represented by the few remaining works of the Painters 11 period, each one now a rare and historic painting. **Paul Fournier's** newly completed work, wonderfully romantic and beautiful, follows his successful exhibition earlier this year. The 2007 **Dorothy Knowles** painting is an important precursor for her forthcoming exhibition in Spring 2009, and a major **Gershon Iskowitz** from an important private collection follows his hugely successful exhibition of 1970's work from the Estate this past June. An exceptional painting by **Hunt Slonem** introduces a new subject matter to many of you who are now becoming increasingly familiar with his work. The late American Post-Modern collection for the Art Fair is headlined by **Milton Avery, Adolph Gottlieb, Philip Pearlstein, Robert Motherwell** and **George Segal**. **Frank Stella** comes "off the wall" with Stubb's Last Meal, and **Jules Olitski, Larry Poons** and **Hans Hofmann** complete the line-up.

We look forward to seeing you all at the
Toronto International Art Fair.

In the meanwhile, enjoy!

I am delighted to bring you another edition of my Collector's Choice catalogue, to coincide with the Toronto International Art Fair which opens the 2008 Fall season. The catalogue, (like my many interests), roams far and wide, and contains many new works of old favourites, as well as a few new favourites. I am particularly excited about the stunning new **Jean-Paul Riopelle** aquisition, Epiphanie, and our beautiful last minute addition of a **David Milne** canvas.

Sculpture has always been a passion of mine, and this year's catalogue presents a newly acquired **Lynn Chadwick** bronze; a life-size **Arman** named Diana; we are also very excited to be offering a sensational work by **Zadok Ben-David**, which will be new to TIAF audiences. Given the artist's hectic exhibition schedule and the great demand for his work, I am very privileged to be able to acquire a piece for the Fair. We will also be previewing the stunning work of **Igor Mitoraj** - the exhibition opens in the gallery October 18th, 2008. There will be a new catalogue dedicated entirely to this show.



George Rickey UNTITLED
1990, Stainless Steel, Edition 2/3
52 x 30 x 4" (132 x 76 x 10cm)
signed, dated



Jean-Paul Riopelle
EIPHANIE
1956, Oil on Canvas
29 x 39.25" (73.5 x 99.5cm)
signed, dated lower right



Milton Avery
PIGEONS ON THE ROCKS
1961, Oil on Canvas
32 x 40" (76 x 101.5cm)
signed, dated lower left



Frank Stella STUBB'S LAST MEAL
1986, Bronze and Steel, Edition 3/3
28 x 42 x 17" (71 x 106.5 x 43cm)
signed

*"The paintings got sculptural because the forms got more complicated.
I've learned to weave in and out."*



Lynn Chadwick
SITTING COUPLE II
1989, Bronze, Edition 2/9
18 x 10.25 x 7.75"
(45.5 26 x 20cm)
initialled





Jack Bush GREYS - SQUARES
1961, Oil on Canvas
61 x 81.5" (155 x 207cm)
signed, dated lower right
signed, dated, titled verso



Lynn Chadwick
MAQUETTE II
FOR TEDDY BOY & GIRL
1956, Bronze, Edition of 6
15 x 6.5 x 5" (38 x 16.5 x 12.5cm)
signed





Robert Motherwell NIP AND TUCK
1984, Acrylic Collage and Ink on Canvas board
40 x 30" (101.5 x 76cm)
signed, dated upper left



George Segal
WOMAN NEXT TO BLACK COLUMN
1981-88, Plaster and Wood
48.25 x 33.5 x 8.75" (122.5 x 85 x 22cm)



Milton Avery MANDOLIN PLAYER
1931, Oil on Canvas board
36 x 28" (91.5 x 71 cm)
signed top left and right



David Milne
FLOODED PROSPECT SHAFT
1929, Oil on Canvas
12.25 x 16" (31 x 40.5cm)
signed, dated lower right



Hans Hofmann
FOREBODING OF SPRING
1962, Oil on Canvas
25 x 30" (63.5 x 76cm)
signed, dated lower right



Paul Fournier

GENESIS SURGE

2008

Acrylic on Canvas

50.25 x 100.25" (127.5 x 254.5cm)



Dorothy Knowles EARLY FALL
2007, Acrylic on Canvas
40 x 60" (101.5 x 152.5cm)
signed verso



Philip Pearlstein
TWO NUDES WITH CAMP CHAIR
1969, Oil on Canvas
60.5 x 72.5" (153.5 x 184cm)
signed, dated lower left

ZADOK BEN-DAVID

Zadok Ben-David was born in Yemen in 1949 before emigrating to Israel. He studied at the Bezalel Academy of Art and Design in Jerusalem, and then furthered his studies at St. Martin's School in London. He represented Israel at the Venice Biennale in 1988. His five metre African Shadow was exhibited in the main piazza of the Olympic Stadium in Beijing this past summer.

The "tree" has become the iconic image of his work. They are created out of machine-cut corten steel and allowed to oxidize naturally. His memorial tree at Yad Vashem Art Museum in Jerusalem attests to the power of the tree as a symbol for our world. Tree 3 is a 3 metre high "living sculpture" which has the capability to change any environment in which it is placed.



Zadok Ben-David
TREE 3
2008, Corten Steel
101.5 x 59 x 30.75"
(258 x 150 x 78cm)



Jack Bush DECEMBER
1961, Oil on Canvas
46 x 66" (117 x 167.5cm)
signed, dated verso



Hunt Slonem BILLIE
2008, Oil on Wood
72 x 60" (183 x 152.5cm)
signed, titled, dated verso

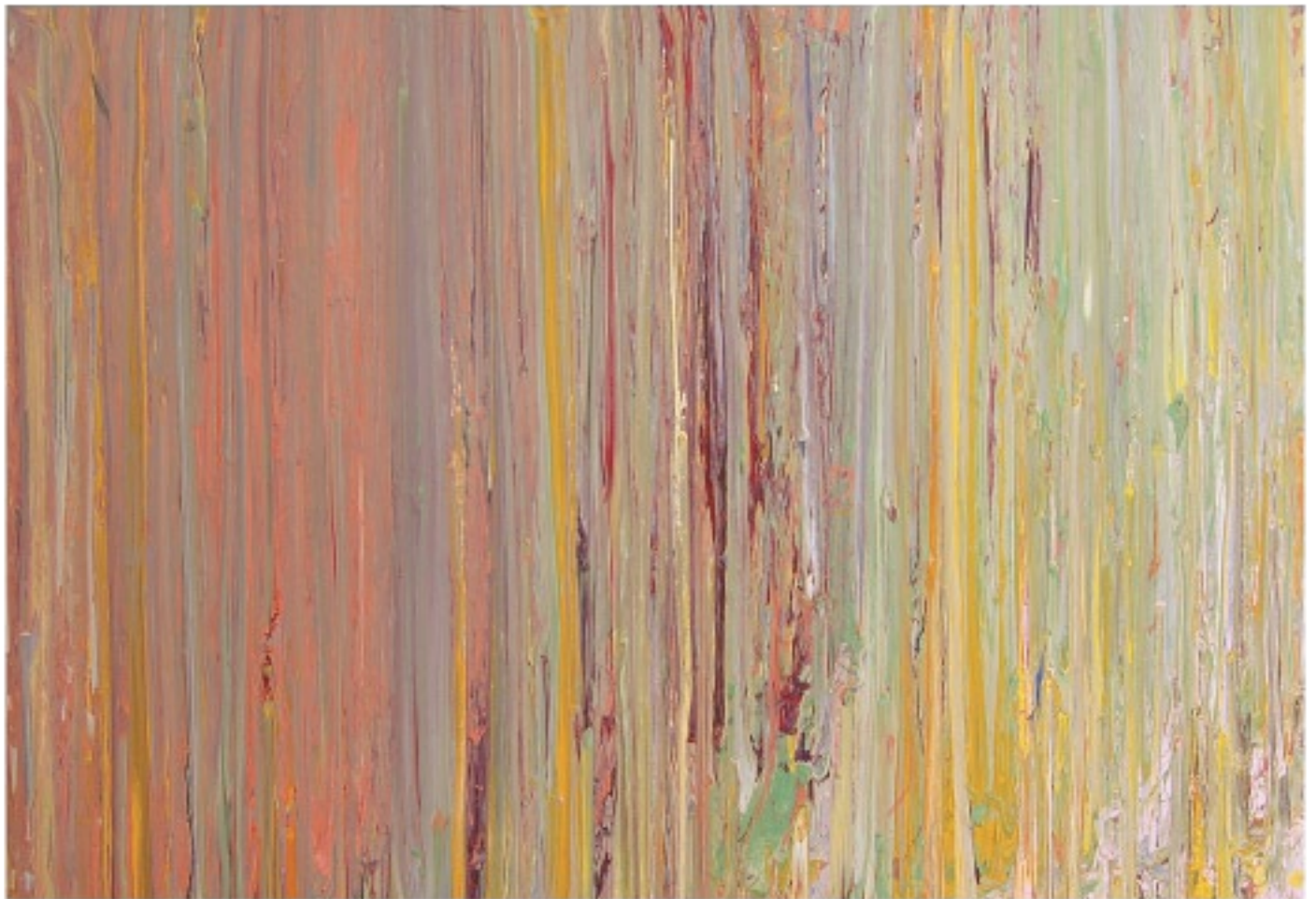


Adolph Gottlieb
RED HALO - PINK GROUND
1967, Acrylic on Paper
20 x 15" (51 x 38cm)
signed, dated lower left



Lynn Chadwick WALKING COUPLE
1980, Bronze, Edition 2/9
18 x 10.25 x 7.75"
(45.5 26 x 20cm)
intialled





Larry Poons UNTITLED
1974, Acrylic on Canvas, 47 x 68.25"
(119.5 x 173.5 cm)
signed, initialled verso



Jack Bush BIRTHDAY
1969, Acrylic on Canvas
49.5 x 26.25" (125.5 x 66.5cm)
Signed and dated verso

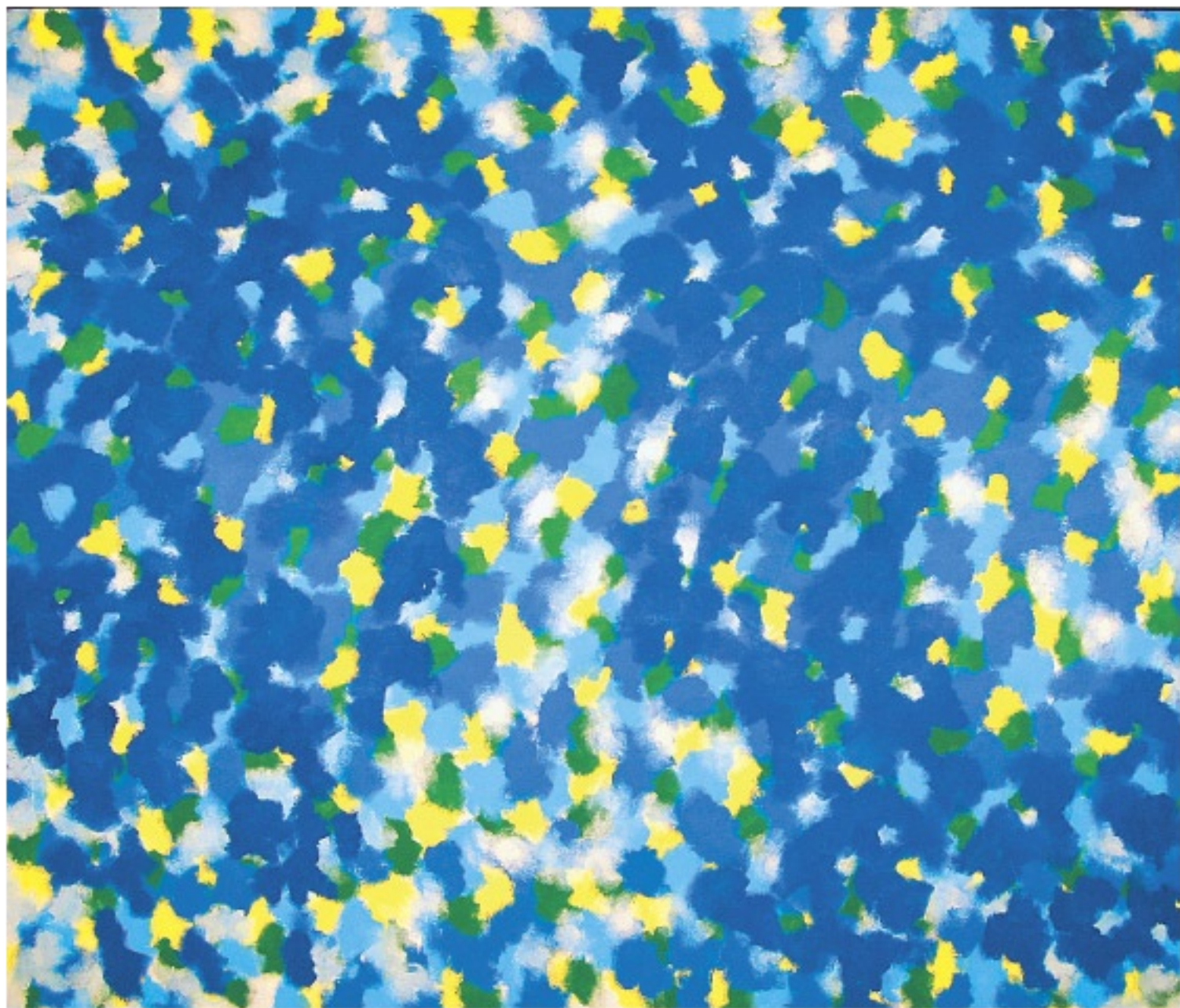
Jules Olitski UNTITLED
1968, Acrylic on Carton
40 x 29.75" (102 x 76cm)





Arman DIANA, NOLI ME TANGERE
1986, Bronze, Edition 1/2
68 x 31 x 20" (173 x 79 x 53cm)
signed





Gershon Iskowitz MIDNIGHT BLUES #3
1976, Oil on Canvas
77 x 90" (198.5 x 225.5cm)
signed, dated, titled verso

BACK COVER: Tony Scherman A GIORGIOS / CUT FLOWERS
2007, Encaustic, Cornmeal, Pigment on Canvas
60 x 60" (152.5 x 152.5cm) signed, dated verso



MIRIAM
SHIELL
FINE ART

16A Hazelton Avenue Toronto, ON M5R 2E2

Tel: 416.925.2461 Fax: 416.925.2471

fineart@miriamshiell.com

www.miriamshiell.com